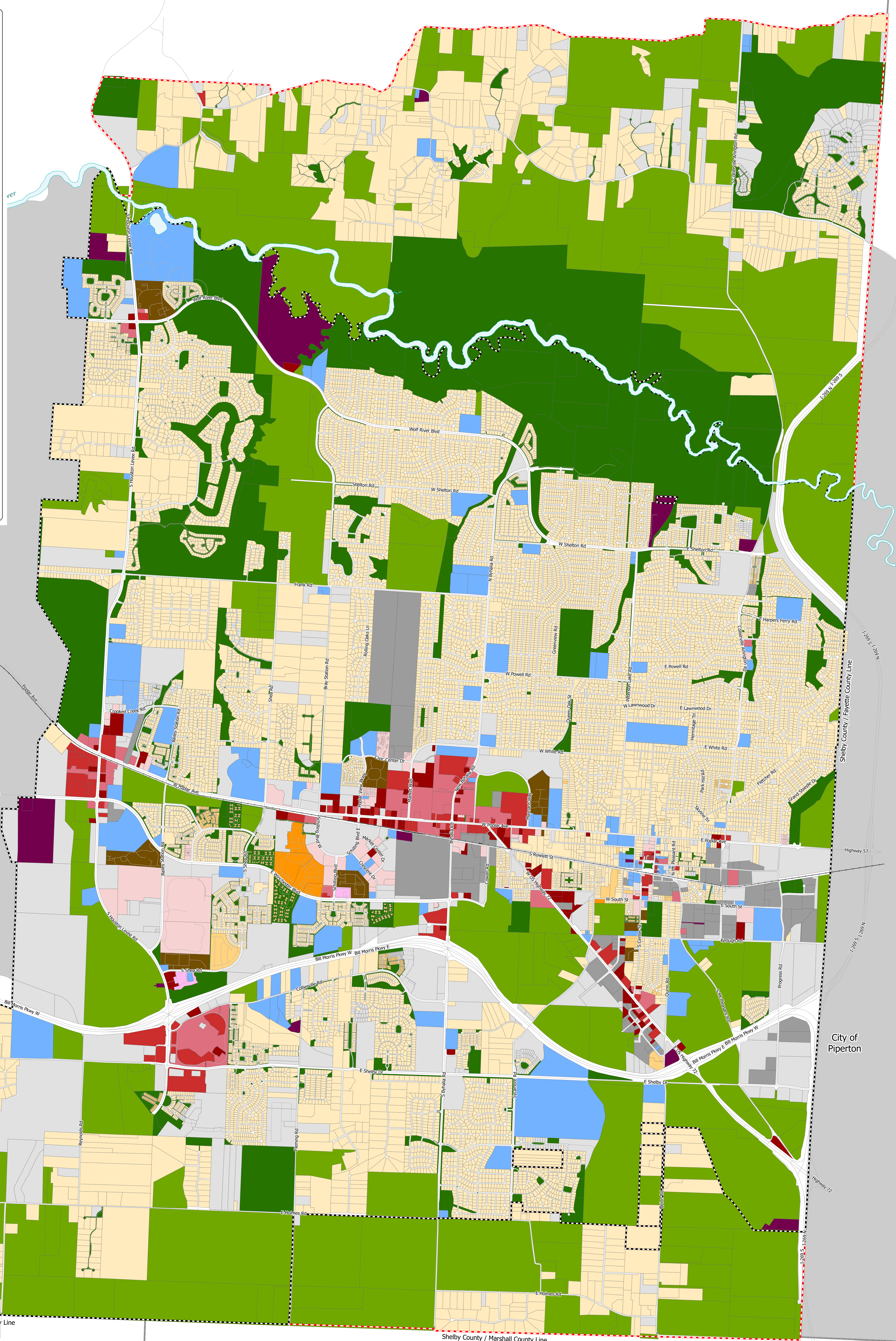


Existing Land Use Inventory

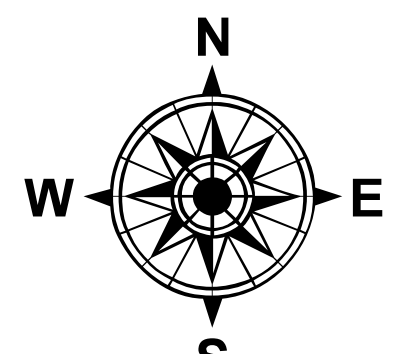
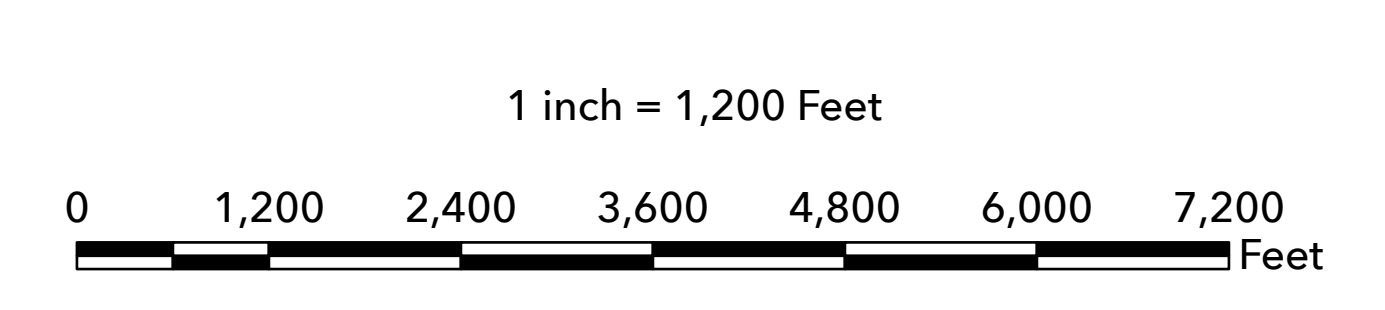
Categories and Descriptions

	Agricultural/Farm uses for same parcel
	Commercial (Intangible) services on same parcel (examples: beauty salon, car wash, movie theater, repair shop - does not include retail)
	Industrial use(s) on same parcel (examples: warehousing/storage, mini-storage, distribution, assembly, processing, fabrication)
	Institutional use(s) on same parcel (examples: government facilities, churches, cemeteries, funeral homes, public/private schools, day care, senior housing, assisted living)
	Mixed, Non-Residential use(s) on same parcel (example: combination of COMM, INST, and/or RET uses on the same parcel)
	Mixed Use Applies to combination of residential and nonresidential uses on the same parcel
	Office use(s) on same parcel (examples: medical, law, professional, real estate office)
	Recreational and Open Space use(s) on same parcel (examples: park, greenbelt, conservation land, subdivision common open space, private neighborhood pool(clubhouse))
	Residential, Attached Horizontal use(s) (example: apartment building; any case where dwellings are stacked on top of other dwellings)
	Residential, Attached Vertical use(s) (examples: duplex, triplex, attached townhomes)
	Residential, Detached use on same parcel (example: single-family detached house)
	Residential, Mixed on same parcel (combination of attached, detached, or multifamily uses on same parcel)
	Retail use(s) on same parcel (tangible goods sold; examples: supermarkets, restaurants, bakeries, car dealerships)
	Utility (examples: MLGW substation, pump station, wastewater treatment plant, cell tower)
	Vacant Undeveloped, unimproved land (does not include farmland, unoccupied buildings)



Land Use Description		Town of Collierville	
	Agricultural/Farm		Town of Collierville
	Commercial		Collierville Annexation Reserve
	Industrial		Railroads
	Institutional		Wolf River
	Mixed, Non-Residential		City of Germantown
	Mixed Use		City of Piperton
	Office		
	Residential, Attached Horizontal		
	Residential, Attached Vertical		
	Residential, Detached		
	Recreational and Open Space		
	Retail		
	Residential, Mixed		
	Utility		
	Vacant		

Existing Land Use
Town of Collierville



Prepared by The Town of Collierville Division of Planning, GIS. Please note that the information in this document has not been field verified. The Town of Collierville hereby releases itself from all responsibilities concerning the accuracy of this map. If you have questions, please contact the Town of Collierville, Division of Planning at (901) 457-2360.